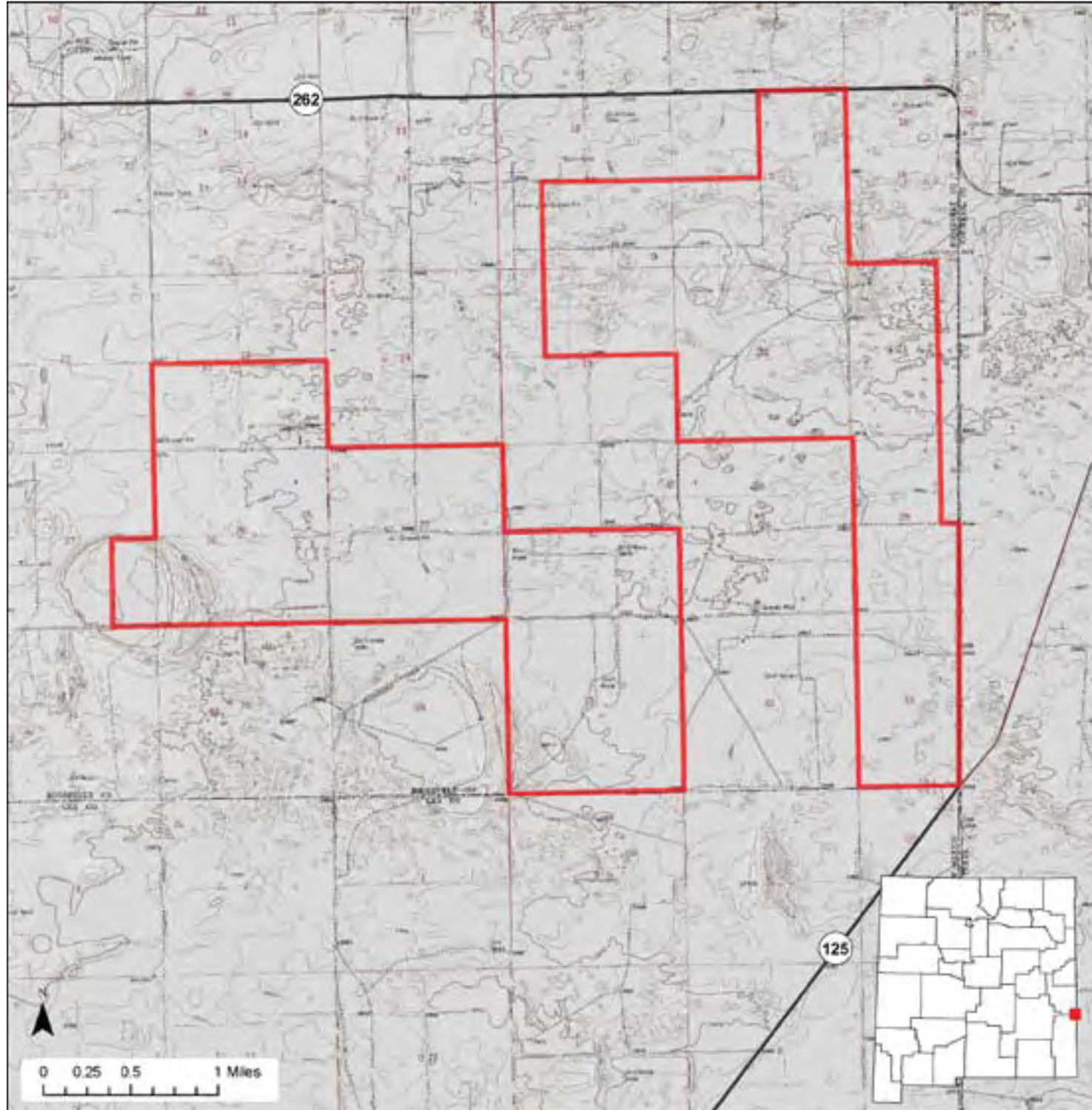




# Sandhills Prairie Conservation Area



**Location:** Sandhills Prairie Conservation Area is located about 12 miles east of Milnesand.

**Total Acreage:** 5,285 acres.

**Purchase:** Sandhills was purchased in 2007 to provide habitat for native prairie wildlife.

**Description:** The Sandhills is composed of rolling grasslands.

**For More information:** More information about hunting, fishing and other activities, may be found on the Department's website: [www.wildlife.state.nm.us/](http://www.wildlife.state.nm.us/).

## GAIN Activities

- ✓ Wildlife Viewing
- ✓ Photographing

### Access

- ✓ Hiking
- ✓ Bicycling
- ✓ Horseback Riding

### Hunting and Fishing

- ✓ Hunting
- ✓ No fishing opportunities

### Closures

- ✓ Yes

### Facilities

- ✓ No rest rooms
- ✓ No camp sites
- ✓ No drinking water

### Fees

- ✓ Yes

### Motorized Vehicles

- ✓ Not allowed beyond the roadway and parking area

**For more information on hunting and fishing rules and seasons, please read current hunting or fishing Rules and Information Booklets available on the Department's website, at Department offices, or from license vendors state-wide.**

## What to See, Do, and Learn

**Wildlife Viewing-**Wildlife watchers may see various species of song birds and game birds including lesser prairie chickens from June 30-February 15. Good binoculars are important. The best time to view wildlife is at dawn or dusk.

**Photographing-**The best time to photograph wildlife is at dawn or dusk. A telephoto lens may be important.

**Hiking-**Hiking is the best way to see wildlife from June 30-February 15 at the Sandhills Prairie Conservation Area or other wildlife management areas.

**Bicycling-**Allowed from June 30-February 15 only on established roads .

**Horseback Riding-**Allowed from June 30-February 15.

**Camping-**Not allowed.

**Hunting-**Hunting for lesser prairie chickens is not allowed. Deer.

**Fishing-**There are no fishing opportunities.

**Closures-**The Sandhills Prairie Conservation Area is closed to all access February 16-June 29.

**Facilities-**There are no rest rooms, camp sites, or drinking water at the Sandhills Prairie Conservation Area.

**Fees-**Hunters must have appropriate licenses and permits. Wildlife viewers, photographers, hikers, bicyclists, and horseback riders must have a valid license or permit. See the Department's website [www.wildlife.state.nm.us](http://www.wildlife.state.nm.us) for more information.

**Motorized Vehicles-**Not allowed beyond roadways and parking area.