

# Macho Landscape Big Game Habitat Connectivity (Netwire Modification)



## Background Information

- To date, the Roswell BLM field office, NMDGF, the NM State Land Office, NWTF, NFWF, MDF and others have connected hundreds of thousands of acres of habitat for pronghorn through the modification of old netwire fence. West of Roswell in the Macho Landscape, nearly every single allotment boundary and pasture fence was sheep wire at one point. Pronghorn and young mule deer cannot move through these netwire fences, limiting their movement and distribution on the landscape.
- Over the last several years, dozens of miles of fence have been modified on BLM and NM State Land Office lands. Funding has come through BLM, HSP, and other sources.
- Additional fence modification work on BLM lands is needed to continue to expand habitat connectivity for big game and other wildlife. The Department continues to partner with the NM State Land Office on NMSLO lands to modify fence using non-HSP funds.

## Roswell Field Office - BLM

**Project Contacts:** BLM – Danica Cooke [dcooke@blm.gov](mailto:dcooke@blm.gov)  
NMDGF – George Farmer [george.farmer@state.nm.us](mailto:george.farmer@state.nm.us)

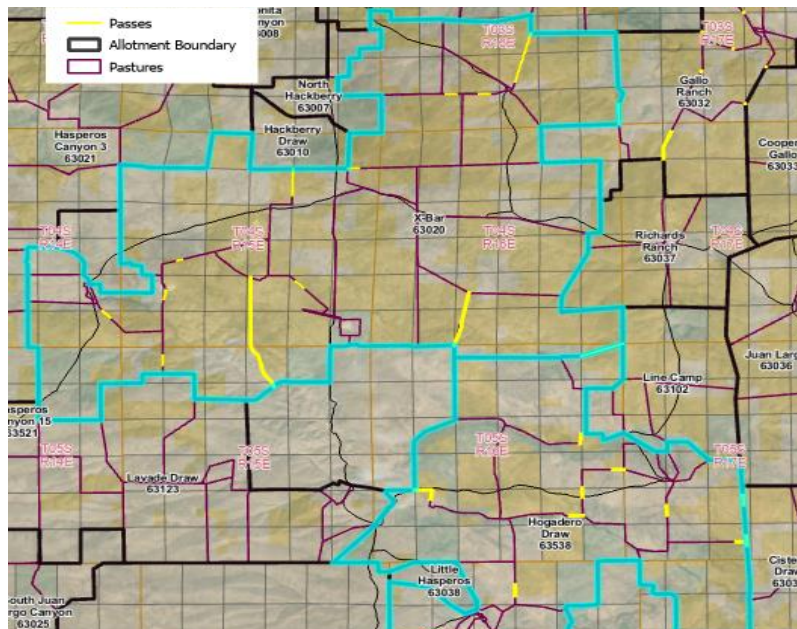
## Proposed Management Actions

- The NMDGF, with collaboration from the Roswell BLM, will contract the removal of ~7 miles of netwire fence, to be replaced with ~7 miles of 4 strand wildlife friendly fence, built to BLM specifications.
- The fence will be replaced in ¼ to ½ mile sections, all on BLM managed public land. Costs are projected to be \$18,000 per mile.
- The actual length of fence that is replaced may change depending on material prices and cost of labor at the time of construction.*

[Google Earth Link](#)

**Estimated Budget for HSP: \$125,000**

## Proposed Fence Modifications in yellow



## Map of Macho Landscape with Completed Fence Modifications

